

Welcome to Glenmeade's

PARENT ORIENTATION

Transitional Kindergarten (TK) &
Kindergarten

TEACHER INTRODUCTIONS

Interim PRINCIPAL: Mrs. Kwon
ASSISTANT PRINCIPAL: Mrs. Fauce

TK

- Mrs. Lau
- Ms. Blakely

K

- Mrs. Lagunas
- Ms. Aguirre

DAILY SCHEDULE TK & Kinder

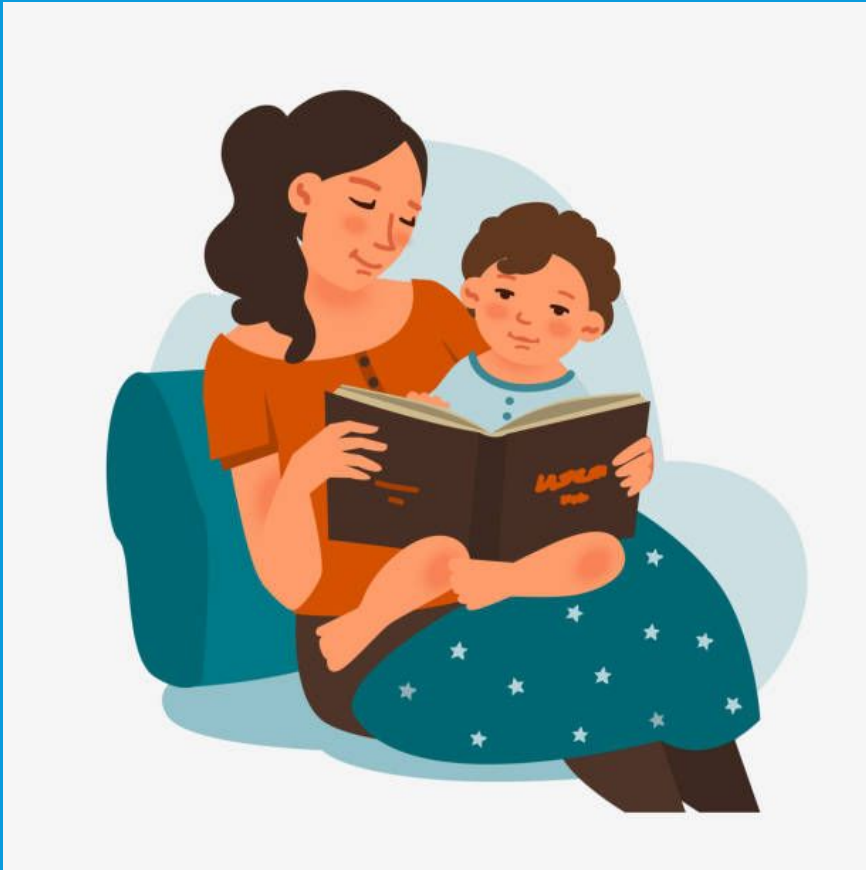
Monday-Wednesday, Friday

AM 7:50 - 11:10

PM 11:10 - 2:30

- AM students can be dropped off at 7:40
- PM students can be dropped off at 11:00
- **Thursday schedule for AM & PM classes: 7:50 - 11:10 (drop off at 7:40)**

Parents Are Your Child's First Teacher



Things to start practicing with your child TODAY!

- Listening
- Communicating Clearly
- Fine Motor Skills
- Bathroom Needs

Active Listening

Active Listening

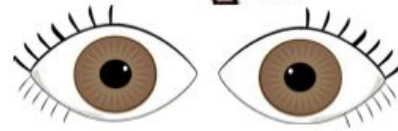
What does it look like?



Body is calm



Brain is thinking



Eyes are
watching



Ears are listening



Voice is quiet



Raise hand to
talk

SCHOOL RULES

Glenmeade
Roadrunners
follow the 3
B's!



How to get your child ready for school

Listen and Follow Directions

- Give your child multi-step directions to follow without repetition
 - **Ex: Put your clothes on, and brush your teeth (say it one time only)**
- Remember this is a class setting, so students need to follow directions the first time **and not wait for directions to be given directly to them.**
- Teach them to respond when an adult is talking to them.

Fine Motor Skills



Practice, Practice, Practice!

- Practice holding a pencil and writing their names. (correct incorrect pencil grip immediately)
- Scissor Skills (thumb up, cut away from body)
- Glue Sticks (twist up, just a little, twist down to cap)
- Glue Bottle (Dot-Dot-Not-A-Lot)

Caring for their Needs



- Your child should be able to use the restroom on their own.
 - Remind them to communicate their needs (May I please use the restroom?)
 - Don't wait too long to avoid potty accidents!
 - Remember to practice pulling clothes up/down and to buckle, zip and snap.
- Practice how to tie your shoes.
- **Packing and unpacking a backpack**
- Opening own snack

Drop Off Procedures

AM

Drop-off begins at **7:40 am**

School Starts at **7:50 am**

Pick-up at **11:10 am**

PM

Drop-off begins at **11:00 am**

School Starts at **11:10 am**

Pick-up at **2:30 pm**

- **Park and walk; DO NOT** use drive-thru lane or leave your car unattended blocking traffic.
 - Gates will be open 10 minutes before start time and closed promptly.
- Late students must sign-in at the office
- During drop-off say goodbye at the gate, and leave room for other children to enter.

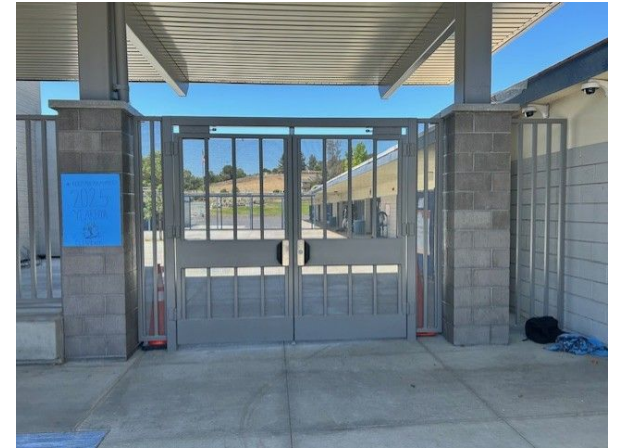
Drop Off Procedures

AM Classes 7:40
PM Classes 11:00



**Drop off Gate for
AM/PM TK**

**AM Kindergarten
PM Kindergarten**



**Drop off Gate:
Rainy Days
TK ONLY**

Pick-Up Procedures

AM

Drop-off begins at **7:40 am**

School Starts at **7:50 am**

Pick-up at **11:10 am**

PM

Drop-off begins at **11:00 am**

School Starts at **11:10 am**

Pick-up at **2:30 pm**

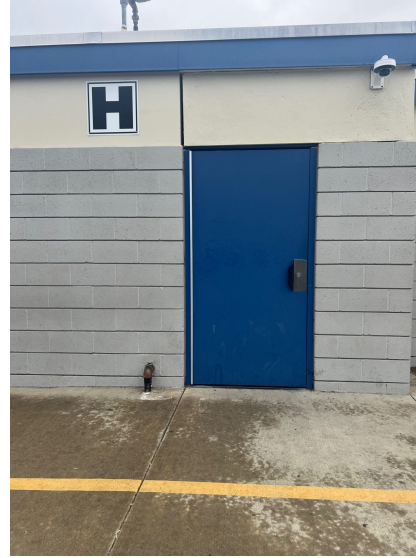
Pick Up Procedures Varies By Grade Level

- Kinder (AM Class) pick up in front of school; AM TK- Look for blue H door
- Kinder (PM Class) pick up blue G door (across from Kinder Gate)
- PM TK pick up at Kinder gate (same as arrival)
- During pick up for AM classes, the bus will park in front of the school, **DO NOT** block its access (park in a stall or street)
- If you are late picking up, please go to the office, must have ID and be on emergency card.
- Thursdays are Glenmeade's minimum day, all TK & K classes will be here in the morning, expect more traffic.

Pick-Up Procedures

AM Classes 11:10
PM Classes 2:30

AM TK



AM Kindergarten



PM TK



PM Kindergarten





DON'T FORGET TO BRING...

- Your child is required to have a regular size backpack (no wheels). Write your child's name on all personal items (lunch pail, sweaters, coats, etc).
- **TK ONLY:** Pack a Ziploc bag with extra clothes, in case of potty accidents!
 - Don't forget to write your child's name on it.
 - Bring a top, bottoms (short, pants, etc.), underwear and socks.
- Remember to practice to buckle, zip and snap at home, since children will have to change on their own.

SNACK TIME

- Small Healthy Snack
 - No soda or candy
 - Bring a water bottle
- Bring a lunch pail with your child's name on it!
- Pack an ice pack if needed, lunch pails will stay outside
- Practice opening snack packages and juice boxes!

*Snack & Recess are combined please pack a **light** snack!*





**Meet the
Teacher
TK & K
Only**

**Thursday, July 31st
1:30 - 2:30 PM**



BACK TO SCHOOL NIGHT

Friday, August 22nd at
Time to be announced
You **DON'T** want to
miss it!

- Specific program details will be discussed and reviewed at BTSN



School Communication



Stay Connected

INSTAGRAM: @glenmeadeelementary

~~TWITTER: @GlenmeadeElem~~

~~WEBSITE: www.chino.k12.ca.us/Glenmeade~~

AERIES COMMUNICATION FEED

PTA INSTAGRAM: @glenmeadepta

PTA WEBSITE: glenmeade.ptboard.com

Set up your Aeries Parent Portal!

- Receive the latest information from Mrs. Kwon directly to your phone or email when you set up your Parent Square account.

Glenmeade Website

- Find all the information you need at www.chino.k12.ca.us/Glenmeade

Roadrunner Report

- Weekly Community Newsletter

Be an Involved Parent

- Join School Site Council
- Join ELAC
- Join PTA
- Volunteer in the Classroom (more details coming)



QUESTIONS

THANK YOU